



Guidanz[®] Diagnostic Toolkit

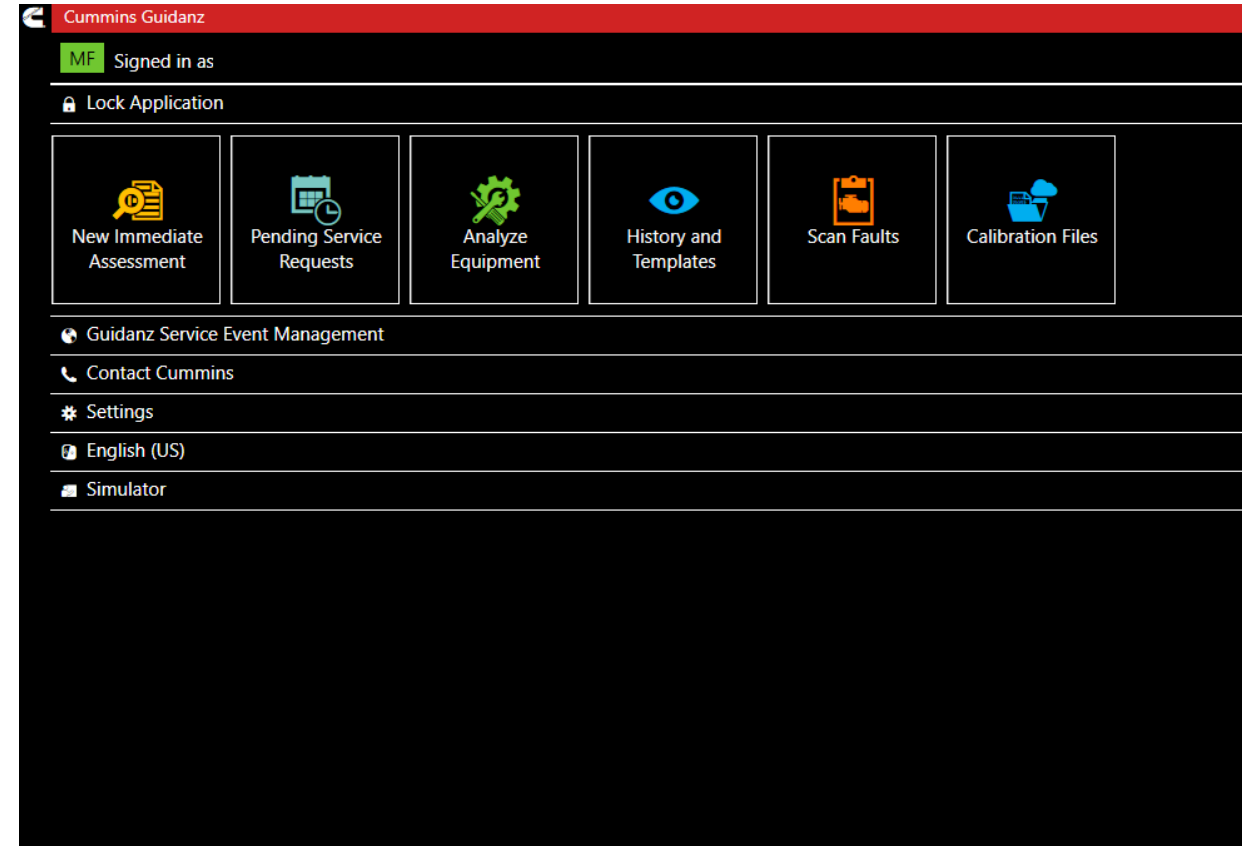
What is Diagnostic Toolkit?

Diagnostic Toolkit contains tools and features that aid in the assessment of key engine data and fault code information for diagnosis via guided troubleshooting.

Immediate Assessment feature makes the triage and intake process faster than ever. It prioritizes fault codes, estimates repair time, and provides information on parts needed and the most likely cause of failure in just a few minutes.

Service Diagnostic feature for supported products is also available for Technicians to complete required troubleshooting steps, maintenance activities and recommended corrective actions.

PowerPlus feature for supported GenSet controllers is available for Technicians to complete required troubleshooting steps, maintenance activities and recommended corrective actions.



Why Switch to Diagnostic Toolkit?

Compatible with Cummins engines from model year 2007 and onward

Integrated with other Cummins systems

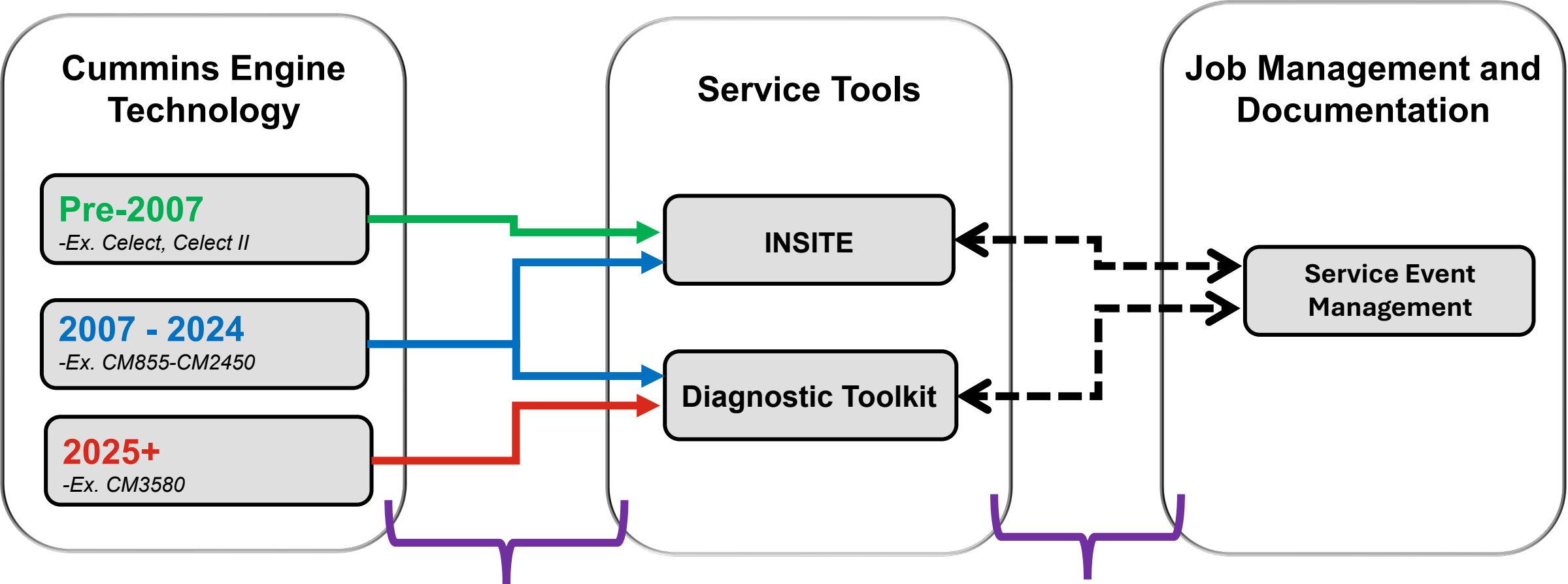
Modern user interface

Seamless access across all your devices – Windows PCs, iOS and Android

More intuitive navigation

INSITE keys are restricted to devices

Guidanz[®] Service Tools Process Flow Chart



- **INSITE** will continue to support Core I & Core II Cummins Engine Technology
- **Diagnostic Toolkit** supports Core II & New Cummins' Technology (2025+)

- Diagnostic Tools and **Service Event Management** integrated
- Diagnostic Tool is launched from Service Event Management

DTK vs INSITE for 2007 - 2024 Engines

Tool Capability	INSITE	DTK - Mobile	DTK - Windows
Faults	✓	✓	✓
Adjust Parameters (Trim or Device Settings)	✓	✓	✓
Calibration	✓	✓	✓
Data Monitoring & Logging	✓	✓	✓
ECU Image & Template	✓	✓	✓
Audit Trail	✓	✓	✓
Diagnostic Tests	✓	✓	✓

Where to find Training

- Training for Guidanz Programs (SEM &DTK) is available in Cummins Service Training (CST)
 - **Program 2021-30F** – Guidanz Service Event Management – Dealer Advanced Users
 - **Program 2021-31F** – Guidanz Service Event Management – Dealer Technician Users
 - **Course 1427** – Guidanz Diagnostic Tool Kit – Service Diagnostics – Overview
 - **Course 1629** – Cummins Service Calibration Management SCM Overview Skill Base Course
- Videos for DTK are available on YouTube
 - [Cummins Guidanz Playlist](#)

Program ID	Color	Program Name
2021-30F	Red	Guidanz Service Event Management - Dealer Advanced Users
2021-31F	Red	Guidanz Service Event Management - Dealer Technician Users

Course ID	Course Name	Course Time	Course Type
1427	Guidanz Diagnostic Tool Kit - Service Diagnostics - Overview	0.1 hours	Online
1629	Cummins Service Calibration Management SCM Overview Skill Base Course	0.3 hours	Online

The screenshot shows a YouTube playlist interface. The main video player displays a video from the 'Cummins Guidanz' playlist. To the right, a list of six videos is shown, each with a thumbnail, title, and view count:

1. GDTK Windows Demo Images&Templates (Cummins • 119 views • 5 months ago)
2. GDTK Windows Demo Connection&Intake (Cummins • 42 views • 5 months ago)
3. GDTK Windows Demo DML (Cummins • 32 views • 5 months ago)
4. GDTK Windows Demo Faults (Cummins • 27 views • 5 months ago)
5. GDTK Windows Demo Device Settings (Cummins • 29 views • 5 months ago)
6. GDTK Windows Demo DeviceDashboard (Cummins • 22 views • 5 months ago)

Where to get Support

Subscription Support - Available from the local Subscription Support team* (Channel Management)

Functionality Support - Available through Cummins Care. Just contact as you have previously.



* Subscription Team contacts:

- US – cssna.ertools@cummins.com
- Eastern Canada – cec.ertools@cummins.com
- Western Canada – cwcetools@cummins.com
- Global – cummins.com/locations

